

# Foundation Matters

## A NEWSLETTER OF ROTARY DISTRICT 9550 2014-2015

### Gregarious



#### Welcome to Issue # 2 - November 2014

Contributions to the Rotary Foundation from our District so far this year are up 33 %, due to an early donation from Darwin Rotary Club. Our contributions to PolioPlus are up 46 % as well !

With the official Rotary exchange rate going the wrong way for us, it's more expensive to make those Club contributions. Then again, if you need a personal tax deduction, now's the time to put some money in. Don't leave it until June. Plan to make regular payments throughout the year. Perhaps you could recognise a relative for Christmas with a donation to our Foundation.

In this issue, we're going to look at the Paul Harris Society, how it came about, when it was adopted by Rotary International, and how it works. The current aim of the Rotary Foundation is to have at least one PHS member in each Club. Have a look at your Club, there maybe someone who can make the commitment to the Paul Harris Society.

We're also going to provide a list of the successful Clubs obtaining a District Grant this year.

Finally, to assist your Club raise funds for PolioPlus, the popular Movie Night is happening again in February 2015.

Issue # 3 will be issued in February

**Cheers**

**Greg Marlow**

**District Rotary Foundation Chair 2013-2016**

Ph: 08 8962 2322 (B)      Mobile: 04 1903 3637

Email: [greg@marlowcanete.com.au](mailto:greg@marlowcanete.com.au) or [foundchair@d9550rotary.org.au](mailto:foundchair@d9550rotary.org.au)

**\$\$ - RI EXCHANGE RATE - \$\$**

**RI Exchange Rate for November and December 2014 – 1.14**

**For every AU\$1140, we are contributing US\$1,000.**



## ***Paul Harris Society***

The Paul Harris Society recognizes Rotarians and friends of The Rotary Foundation who personally contribute US\$1,000 or more to the Annual Fund, PolioPlus or an approved Foundation grant each year.

### **HISTORY**

The Paul Harris Society was originally created in 1999 by Past District Governor Wayne Cusick from District 5340. He realized that giving US\$1,000 annually to the Foundation was not possible for every Rotarian, but many could be encouraged to contribute at this level or above. He introduced the Paul Harris Society program to encourage and recognise these individuals. This idea gained momentum and quickly spread to other districts throughout the world. While this recognition was originally designed as a District administered program, the Trustees adopted the Paul Harris Society as an official recognition program of The Rotary Foundation effective 1 July 2013.

### **BENEFITS TO JOINING**

In any given year, less than 3 percent of Rotary Foundation donors contribute at the Paul Harris Society level or above, yet their contributions represent approximately 35 percent of all annual giving. As Rotary Foundation grants and activities are largely funded by Annual Fund contributions, Paul Harris Society members help determine how many individuals, families and communities Rotary can impact each year.

### **RECOGNITION**

Each Rotary District is encouraged to honour and recognize Paul Harris Society members in accordance to the individual donor's wishes and as culturally appropriate. All members of the Paul Harris Society are eligible to receive a wearable recognition insignia in appreciation for their support. Displaying the PHS insignia with a Paul Harris Fellow or Major Donor pin can help build awareness and enthusiasm for the work that Rotary does locally and around the world. The Rotary Foundation has an optional Paul Harris Society certificate. Many Districts host Paul Harris Society members at recognition events.

### **JOINING THE PAUL HARRIS SOCIETY**

Rotarians and friends of Rotary can join the Paul Harris Society through several options:

- Contribute online at [www.rotary.org/contribute](http://www.rotary.org/contribute). Monthly gifts of US\$85 or quarterly contributions of \$250 automatically make an individual a member of the Paul Harris Society
- Complete and send in the PHS enrolment and contribution form found in the [Paul Harris Society Brochure](#)
- Notify our [District Rotary Foundation Chair](#), [Paul Harris Society Co-ordinator](#) or other District leader of your interest in joining the Paul Harris Society
- Receive your wearable PHS recognition pin by District leadership who will be able to order the insignias from The Rotary Foundation.

## District Grants in District 9550 for 2014-15

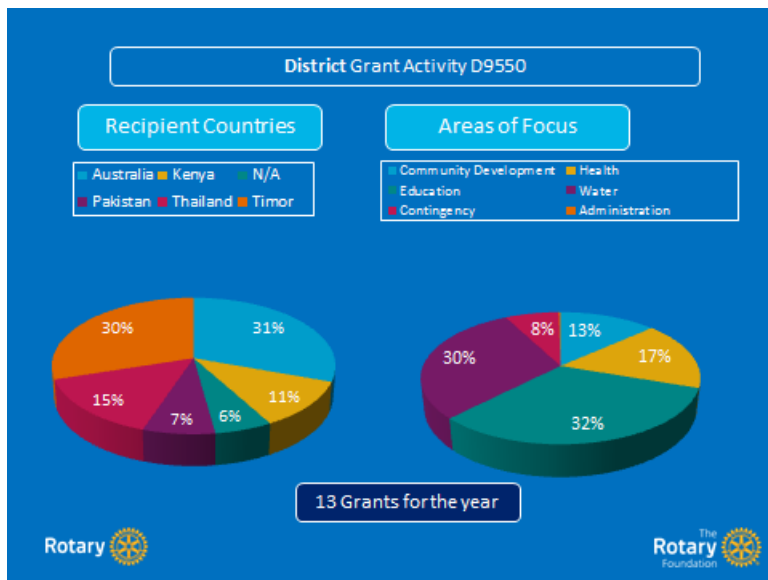
With \$ 47404 USD available this year, the Grants subcommittee received 16 proposals from Clubs around District 9550. Four Clubs applied for a second grant. In addition, a contingency of 20 % was set aside for a proposed Group Study Exchange team. A total of 21 applications were received, which was up on last year's 11 grants to 10 Clubs.

Two applications were for District activities; Rotary Youth Leadership Awards and the Rotary Youth Exchange program. After a month of discussion, it was determined that the RYE program had enough funds to run their activities and that Clubs should be funding the second exchange student from Timor L'Este to Brazil. The grant for RYLA is to set the program up for the next three years.

The List below shows those Clubs in the District receiving a District Grant this year.

Club	Activity	Description	US Dollars	AU Dollars
<b>District 9550</b>	Contingency	Proposed GSE Team	9481	10145
<b>Atherton</b>	Education: General	Outdoor shelter	2108	2255
<b>Ayr</b>	Community Development	Aged care facilities	3271	3500
<b>Cairns Southside</b>	Community Development	Youth equipment	2110	2257.28
<b>Cairns Sunrise</b>	Health: General	Sewing machines	2804	3000
<b>Charters Towers</b>	Health: General	Prosthetic hands	2804	3000
<b>Katherine</b>	Community Development	Road safety	934	1000
<b>Magnetic Island</b>	Community Development	Renovation project	2108	2255
<b>Mount Isa Southwest</b>	Community Development	NQ Helicopters	2336	2500
<b>Mundingburra</b>	Health: General	Nepal hearing project	3551	3800
<b>Tennant Creek</b>	Community Development	Solar lights	5607	6000
<b>Townsville Central</b>	Education: Scholarship	Orphanage	2108	2255
<b>Townsville Daybreak</b>	Education: Scholarship	Educating Calvin	2804	3000
<b>Townsville Southwest</b>	Community Development	Bus	2108	2255
<b>Townsville Sunrise</b>	Education: General	RYLA	2336	2500
<b>Tully</b>	Community Development	Walkway	934	1000
<b>TOTALS</b>			<b>47404</b>	<b>50722.28</b>

The following slide shows the that the clubs spent their District Grants in 4 other countries ( six, if you include the GSE to India ). Water and Education from the Areas of Focus took up 62 % of the Grant funds. There were no funds set aside for administration.



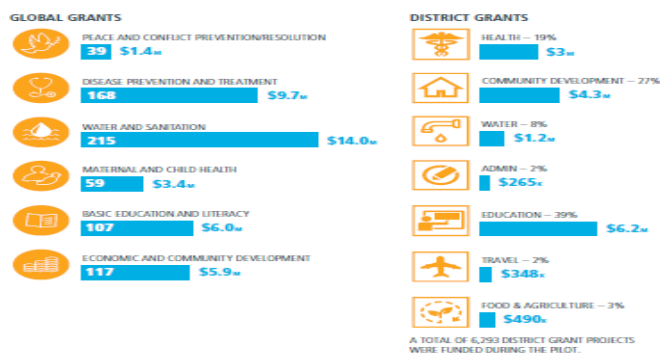
### What is proposed for 2015-16, is that a Club:

- 1] Has to contribute a minimum of \$ 100 per capita in the previous year to Annual Programs.
- 2] Must have Foundation Goals set in Rotary Club Central before submitting an application.
- 3] Must submit a Club MOU to District together with their application.
- 4] May receive a maximum of \$ 3000 to any one Club.
- 5] Will receive funds on a strictly pro-rata basis, if a scale back is required.
- 6] Can use a Corporate donation, three years after the donation is received.

### DRFC Greg Marlow

#### GLOBAL GRANTS AND DISTRICT GRANTS BY AREA OF FOCUS AND ACTIVITY

Clubs and districts participated in a variety of activities during the pilot. District grants shows a full range of activities that can be funded in the new grant type. The activity in global grants shows how Rotarians embraced each of the areas of focus during the pilot.



#### PARTICIPATION

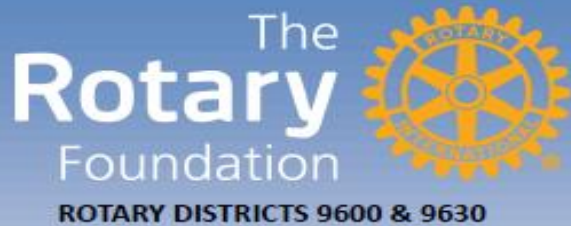
Participation increased steadily throughout the pilot. By the end, 23% of clubs had participated in global grants and 41% had participated in district grants. Participation was not just in terms of grants: the average APF giving rose to \$104 per person during the pilot, and total giving increased \$9.3 million in pilot districts, meaning that Rotarians in the pilot showed continued and increased engagement with The Rotary Foundation as a whole.



## STEPS TAKEN BASED ON THE PILOT

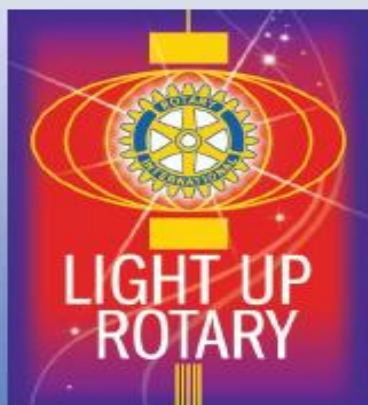
The pilot was an opportunity to try many new ideas and practices, and collect feedback from Rotarians before launching the new model globally. Regular survey and focus group work, combined with programmatic research and evaluation, led to many changes to the program for global launch:

- Creation of Area of Focus Policy Statements
- Proposal step replaced by First Steps
- The additional flexibility provided by the District Grant spending plan
- Adjustment to travel requirements as part of Global Grants
- Refinements to VTT selection process
- Additional training and communication about sustainability requirements
- More support for club and district measurement and evaluation activities



# MILLION DOLLAR DINNER

OUR GOAL IS TO RAISE IN  
EXCESS OF \$1,000,000 FOR  
OUR FOUNDATION  
THROUGH THIS EVENT.



DONORS WHO MAKE A  
**NEW** GIFT, PLEDGE, OR  
BEQUEST OF AT LEAST

**\$10,000**

BY 14th FEBRUARY 2015  
WILL BE INVITED TO THE  
ROTARY MILLION DOLLAR  
DINNER, TO BE HELD AT  
PULLMAN BRISBANE  
KING GEORGE SQUARE,  
ON SATURDAY  
28th FEBRUARY 2015.

*Please consider making a  
significant gift to  
OUR FOUNDATION.*

For more information,

Contact

PDG Eric Wood,

0418 789951

E. [ericwood@bigpond.com](mailto:ericwood@bigpond.com)

Feel like a short break in Brisbane?



## Polio Plus Movie fundraiser

Through the Regional Office in Parramatta and 20<sup>th</sup> Century Fox, we again have the opportunity to fundraise for Polio by running a movie on February 25.

It's recommended that you ask for a screening at \$ 10 per head. Charge \$ 20. The profit goes to PolioPlus

### All you have to do:

Contact your local cinema. Book the date. Advertise. Collect the money. Pay the cinema. Organise any pre-screening nibblyies or drinks.

20<sup>th</sup> Century Fox state manager – QLD/NT: Nicola Warman-Flood [Nicola@thefilmgirl.com.au](mailto:Nicola@thefilmgirl.com.au)



If you watch the trailer from Youtube, you'll get an idea of what we can look forward to in the Second Best Exotic Marigold Hotel.

<http://youtu.be/GrIkaGUUtK8>

My understanding is that arrangements are already underway in Cairns, Darwin and Townsville. There's also possibilities in Charters Towers, Katherine, Ingham, Ayr and Proserpine.

Go to it!



The Australian Rotary Foundation Trust of Rotary International

I wish to donate to The Rotary Foundation of Rotary International through The Australian Rotary Foundation Trust

Designation: Annual Fund (Share) Polio Plus Fund Endowment Fund

First name Last Name

Home Address

State Post Code Tel Mobile

E-mail address

Rotary Club of District

Rotary International Membership Number (Available from your Club Secretary)

PAYMENT DETAILS AMOUNT in Australian currency: \$

Select method of payment: Cheque, Direct Debit or Credit Card, below:

Cheque Payable to: The Australian Rotary Foundation Trust

Direct Debit By signing this document, I/We authorise: THE AUSTRALIAN ROTARY FOUNDATION TRUST

with ABN 55 218 421 934 and with Debit User Number 352263 he Debit User, to debit my/our account, detailed in the Schedule below, through the Direct Debit System. I/we must pay you when due under the arrangement between us. This authority is to remain in force until further notice. (see Direct Debit Service Agreement overleaf)

BSB Account Number

NAME ON ACCOUNT:

NAME OF FINANCIAL INSTITUTION:

Frequency Preferred Calendar Date

Once only Monthly Quarterly Half Yearly Yearly

SIGNATURE: Date:

Credit Card MASTERCARD VISA

Name on Card

Card No EXPIRY DATE: CVV

(The Card Verification Value (CVV) is the three digit code at the back of the card near the cardholder's signature)

SIGNATURE: Date:

Frequency Preferred Calendar Date

Once only Monthly Quarterly Half Yearly Yearly

Return completed form: PO Box 1415, Parramatta NSW 2124; fax 02 8894 9899; or email risppo@rotary.org

You can also donate online via the Rotary International website, www.rotary.org

DONATIONS OVER \$2.00 ARE TAX DEDUCTIBLE